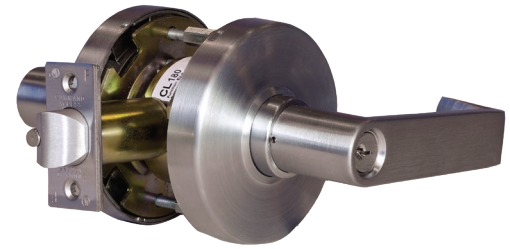




ELECTRIFIED CYLINDRICAL LOCK

CL 180-LE Series

- UNIVERSAL INPUT VOLTAGE: 11-30 VAC/DC W/ AUTO DETECTION TECHNOLOGY; NO NEED TO FLIP A SWITCH
- GRADE 1 - UL LISTED - CLUTCHING LOCK
- REX BUILT IN AT NO EXTRA COST
- 3 YEAR WARRANTY - FLEXIBLE & DURABLE - BUILT TO LAST IN THE USA



The Command Access CL180 LE series is a low-energy, cost effective cylindrical lock that is ideal for any continuous duty application or condition requiring low surge and hold current. Its unique electronics allow the CL180LE to function much like a motor-driven lockset without the potential problems inherent in motors. The CL180LE will operate with an input voltage between 11-30 volts, eliminating the need to inventory 12 and 24V models. The CL180LE features a standard Built-in Request to exit (REX/AE) switch.

SPECIFICATIONS

Voltage:

- Operating Voltage - 11-30 VDC
- Surge Current: 400 mA @ 12V, 200 mA @ 24V
- Holding Current: 30 mA
- Specify Fail Safe (EL) or Fail Secure (EU)

Accessories:

- 2-3/8" backset available

Trims Available:



Finishes Available:

612, 613, 625, 626

Features:

- Low maximum current draw 400 mA (12V): use more locks on a single power supply. Additional savings for the owner
- Low holding current 30 mA : reliable operation and meets sustainable consideration
- Fail Safe (EL) & Fail Secure (EU) available; not field selectable
- Multiple lever styles available
- Available SFIC or LFIC (Schlage): Cylinder not included
- Available with Schlage C type keyway standard

Models Available:

CL180LE-EL Outside lever locked (EL) electronically. Latchbolt retracted by key outside or lever inside. Switched power allows outside lever to retract latchbolt. Inside lever is always free for immediate egress.

CL180LE-EU Outside lever unlocked (EU) electronically. Latchbolt retracted by key out-side or lever inside. Switched power allows outside lever to retract latchbolt. Inside lever is always free for immediate egress