

NEW PRODUCT REVIEW

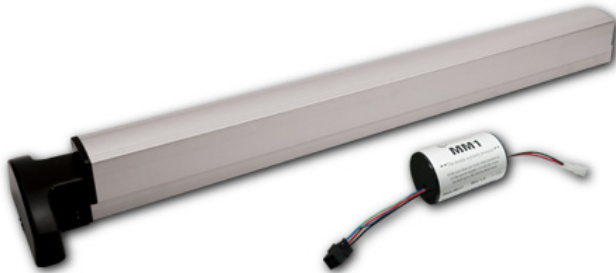
08-23-2011



PD10-M

Scheduled Availability: 10/01/2011

A motor driven, latch-pullback modification of the popular Command Access PD10 series devices. The unit draws 1 amp when retracting and draws 200 mA while holding (dogging).



Features

- Compatible with almost all 1 amp or greater 24VDC power supplies.
- The unit retracts the pad so the customer can electronically dog the device if desired.
- Quiet operation – perfect for conditions where typical solenoid pullback noise is an issue.
- Quick retraction – the latchbolt is retracted in less than ½ second.
- Electronic Latch pullback adjustment – allows customer to fine tune the latch travel with RIM and CVR devices.

LPM180

Scheduled Availability: 11/01/2011

A solenoid driven mortise lock that when energized fully retracts the latchbolt.



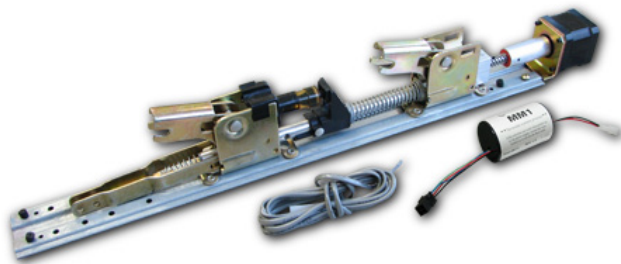
Features

- No special lock prep required, fits in a standard mortise pocket prepped for Schlage "L" series lock.
- Utilizes our patented PM/PWM200 technology.
- PWM circuitry allows for continuous on "push/pull" applications if needed.
- Designed to work with PS1N, PS2/BB and PS8 power supplies.
- Available in a Schlage compatible chassis only, or with trim.

VLP-M-KIT

NOW SHIPPING

A motor driven, latch-pullback modification of Von Duprin 33/35/98/99/98XP/99XP factory baseplate.



Features

- The unit draws 1 amp when retracting and draws 200 mA while holding (dogging).
- Compatible with almost all 1 amp or greater 24VDC power supplies.
- The unit retracts the pad so the customer can electronically dog the device if desired.
- Quiet operation – perfect for conditions where typical solenoid pullback noise is an issue.
- Quick retraction – the latchbolt is retracted in less than ½ second.
- Electronic Latch pullback adjustment – allows customer to fine tune the latch travel with RIM, MORTISE, CVR and SVR devices.

Visit our website for more details
www.commandaccess.com

Customer Support
888-622-2377 or 714-449-1422

NEW PRODUCT REVIEW

08-23-2011



YALLP-M/CORLP-M

Scheduled Availability: 11/01/2011

A motor driven, latch-pullback modification of the Yale 7100/7200 and the Corbin 4000/5000 series devices.



Features

- The unit draws 1 amp when retracting and draws 200 mA while holding (dogging).
- Compatible with almost all 1 amp or greater 24VDC power supplies.
- The unit retracts the pad so the customer can electronically dog the device if desired.
- Quiet operation – perfect for conditions where typical solenoid pullback noise is an issue.
- Quick retraction – the latchbolt is retracted in less than 1/2 second.
- Electronic Latch pullback adjustment – allows customer to fine tune the latch travel with RIM, MORTISE, CVR and SVR devices.

MM1-VD

NOW SHIPPING

A module that mounts inside the Von Duprin QEL device and plugs directly into the existing linear actuator, bypassing the Von Duprin Electronics, allowing the QEL device to be controlled by a PS873 with a 871-2 board, a CAT PSVD-2 board, or most 1A 24VDC (or greater) regulated power supplies.



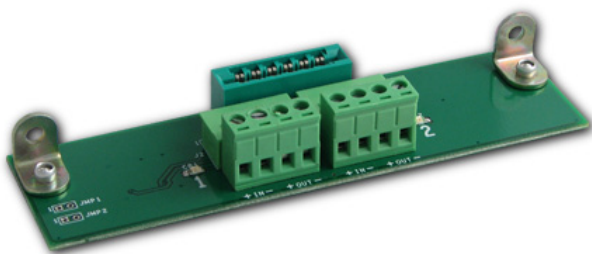
Features

- Solid-state design
- Eliminates need for special 871-2Q boards
- Compatible with most 1A or greater 24VDC regulated power supplies
- 3 year warranty

VD2

NOW SHIPPING

A replacement board manufactured by Command Access to replace discontinued Von Duprin PS871-2 board.



Features

- Solid-state design
- (2) I/Os with priority sensing
- Euro style connectors
- 3 year warranty

Visit our website for more details
www.commandaccess.com

Customer Support
888-622-2377 or 714-449-1422

NEW PRODUCT REVIEW

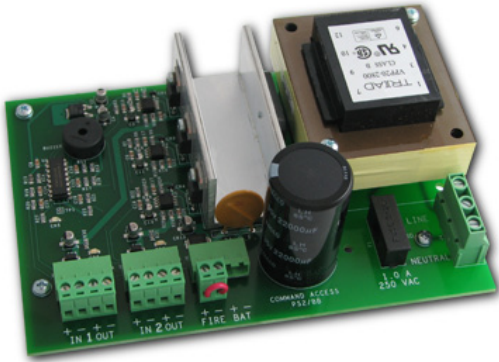
08-23-2011



PS2-BO/PS2BB-BO

NOW SHIPPING

These two channel power supply boards have the same mounting hole locations as the Von Duprin PS873. So in the event of a bad power supply one of our replacement boards can be mounted in it's place in a few minutes rather than removing the entire power supply box. See our catalog for the features of these power supplies.



Features

- Mounts directly on to the 873 main board mounting holes
- Solid-state design
- (2) I/Os with priority sensing
- Euro style connectors
- 3 year warranty

Visit our website for more details
www.commandaccess.com

Customer Support
888-622-2377 or 714-449-1422